

KAILASH **KSP** PROJECT
KAILASH STEEL PROJECT



**STEEL SOLUTION FOR A
STRONGER FUTURE**

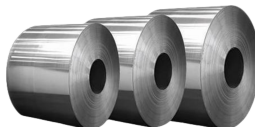
Website - www.kspgrp.com | Email Us - sales@kspgrp.com
Contact +91 7588803355 / +91 7588803366

Welcome To

KAILASH STEEL PROJECT



KSP Group was established in 2005 and started as a Steel Products trading company in the beginning. KSP Group has grown up rapidly to be a global Steel supplier based on strong financial structure, large volume of inventory/stock, biggest manufacturing facilities, accumulated technologies and experiences. We have supplied our products to the world wide major customer's comprehensive industrial area such as Oil & Gas, Automotive, Chemical & Petrochemical, Water treatment, Nuclear & Power Plant, Offshore platform & Shipbuilding.





VISION

KSP Group Vision is to inspire progress, drive economic growth, and create a world where the potential of steel is limitless.

MISSION

Our Mission is to be the premier partner for our clients in sourcing high-quality steel products. We are dedicated to delivering reliable, cost-effective solutions that meet and exceed our customers' expectations.



VALUES

Integrity: Conducting business with honesty, transparency, and ethical standards.

Customer Focus: Prioritizing and exceeding customer needs and expectations through responsive communication and tailored solutions.

Innovation: Embracing creativity and continuous improvement to enhance processes, products, and services.

Quality: Delivering high-quality steel products that meet or exceed industry standards.

Pursuit of Excellence: Striving for excellence in all aspects of our work, consistently delivering outstanding results.

Sustainability: Integrating environmental, social, and economic sustainability principles into our business practices.

Continuous Improvement: Pursuing ongoing learning and development, seeking feedback, and making changes to improve continuously.



QUALITY POLICY

We focus on understanding and meeting our customers' needs. By delivering products that meet or exceed expectations, we build lasting relationships based on trust and satisfaction. Our rigorous quality control at every manufacturing stage ensures our steel products meet international standards for durability, strength, and performance. We adhere to all industry standards, regulations, and legal requirements. Our operations comply with quality management systems, ensuring consistency, traceability, and accountability.

OUR SERVICES



To Provide the best in quality products to our customers worldwide. KSP Group typically offers a wide range of steel products, including sheets, plates, bars, pipes, tubes, Flanges, Vaccums, Fastners, etc. We use the latest tools and regularly upgrade our products as per the latest market trends and the latest innovations. We also supply customized products as per the client's requirement.

OUR PRODUCTS RANGE



STEEL PIPES AND TUBES

Stainless Steel: ASTM A403 WP 304/304L/304H/316/316L/317/317L/321/310/347/904L etc.

Carbon Steel: ASTM A234 WP /A420 WPL3/A420 WPL6/MSS-SP-75 WPHY 42/46/52/56/60/65/70 Low Temperature

Alloy Steel: ASTM A234 WP1/WP5/WP9/WP11/WP22/WP91 etc.

Nickel Alloys: Monel, Nickel, Inconel, Hastalloy, Titanium, Tantalum, Bismuth, Aluminium, High Speed Steel, Copper, Brass, Bronze, Zinc, Lead, 904L, Alloy 20, etc.

Duplex & Super Duplex Steel: UNS S31803, UNS S32750, UNS S32760, etc.

Types: Elbow, Tee, Reducer, Return Bends, Stub-Ends, Cap, Collar, Cross, Insert etc.

Size: 1/4" NB TO 32" NB. (Seamless & Welded)

Wall Thickness: Sch. 5S to Sch. XXS

BUTTWELD FITTING



Stainless Steel: ASTM A403 WP 304/304L/304H/316/316L/317/317L/321/310/347/904L etc.

Carbon Steel: ASTM A234 WP /A420 WPL3/A420 WPL6/MSS-SP-75 WPHY 42/46/52/56/60/65/70

Alloy Steel: ASTM A234 WP1/WP5/WP9/WP11/WP22/WP91 etc.

Nickel Alloys: Monel, Nickel, Inconel, Hastalloy, Titanium, Tantalum, Bismuth, Aluminium, High Speed Steel, Copper, Brass, Bronze, Zinc, Lead, 904L, Alloy 20, etc.

Duplex & Super Duplex Steel: UNS S31803, UNS S32750, UNS S32760, etc.

Types: Elbow, Tee, Reducer, Return Bends, Stub-Ends, Cap, Collar, Cross, Insert etc.

Size: 1/4" NB TO 32" NB. (Seamless & Welded)

Wall Thickness: Sch. 5S to Sch. XXS



FORGED SOCKET WELD & SCREWED FITTINGS

Stainless Steel: ASTM A182 F304/304L/304H/316/316L/317/317L/321/310/347/904L etc.

Carbon Steel: ASTM A105/A694 F42/46/52/56/60/65/70/A350 LF3/A350LF2 etc.

Alloy Steel: ASTM A182 F1/F5/F9/F11/F22/F91 etc.

Other Alloys: Monel, Nickel, Inconel, Hastalloy, Titanium, Tantalum, Bismuth, Aluminium, High Speed Steel, Copper, Brass, Bronze, Zinc, Lead etc.

Types: Elbow, Tee, Union, Cross, CoupBushing, Plug, Swage Nipple, Welding Boss, Hexagon Nipple, Barrel Nipple, Welding Nipple, Parraler Nipple, Street Elbow, Hexagon Nut, Hose Nipple, Bend, Adapter, Insert, Weldolet, Elbowlet, Sockolet, Thredolet, Nipolet, Letrolet, etc.

Size: 1/4" NB TO 4" NB. (Socketweld & Threaded)

Class: 3000#, 6000#, 9000#.

FLANGES



Stainless Steel: ASTM A182 F304/304L/304H/316/316L/317/317L/321/310/347/904L etc.

Carbon Steel: ASTM A105/A694/F42/46/52/56/60/65/70/A350 LF3/A350 LF2, etc.

Alloy Steel: ASTM A182 F1/F5/F9/F11/F22/F91 etc.

Duplex & Super Duplex Steel: UNS S31803, UNS S32750, UNS S32760, 904L, Alloy20, etc.

Other Alloys: Monel, Nickel, Inconel, Hastalloy, Titanium, Tantalum, Bismuth, Aluminium, HighSpeed Steel, Copper, Brass, Bronze, Zinc, Lead etc.

Types: Weldneck, Slipon, Blind, Socket Weld, Lap Joint, Spectacles, Ring Joint, Oriface, Long Weldneck, Deck Flange, RTJ, Flange, etc.

Size: 1/2" NB TO 24" NB.

Class: 150#, 300#, 400#, 600#, 900#, 1500# & 2500#.



FERRULE FITTING

Stainless Steel: ASTM A182 F304/304L/304H/316/316L/317/317L/321/310/347/904L etc.

Carbon Steel: ASTM A105/A694/F42/46/52/56/60/65/70/A350 LF3/A350 LF2, etc.

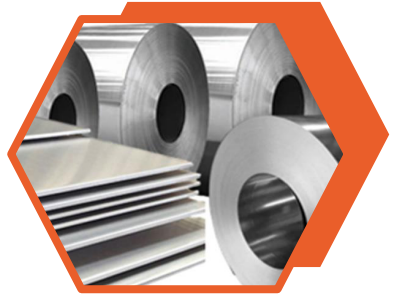
Alloy Steel: ASTM A182 F1/F5/F9/F11/F22/F91 etc.

Duplex & Super Duplex Steel: UNS S31803, UNS S32750, UNS S32760, 904L, Alloy20, etc.

Other Alloys: Stainless Steel, Nickel Alloys, Carbon Steel, Alloy Steel, Monel, Nickel, Inconel, Hastalloy, Titanium, Tantalum, Bismuth, Aluminium, High Speed Steel, Copper, Brass, Bronze, Zinc, Lead etc.

Types: Nipples, Adaptors, Crosses, Union Ball Joints, Reducing Bushing, Reducers, Pipe Caps, Couplings, Pipe Plug, Hollow Hex Plug, Elbow, Reducing Union, 90 Deg. Union Elbow, Union Tee, Female Connector, Male Connector, Manifold Tee, Locator Union, Extended Run Leg Union Tee, Reducing Tee, Tribow, ATW Weld Ring, Tube Socket Weld To Pipe Butt Weld, Tube Butt Weld To Tube Socket Weld, Port Connector, Etc.

SHEET, PLATE & COIL



Stainless Steel Coils, Sheets and Plates: ASTM A 240 Gr. TP 202, 304, 304L, 304H, 304LN, 309, 309S, 309H, 310S, 310H, 316, 316L, 316H, 316LN, 316Ti, 317, 317L, 321, 321H, 347, 347H, 348, 348H, 409, 410, 420, 430 etc.

Alloy Steel Plates: ASTM A 387 Gr. 2,5,9,11,12 & 22 in class 1 & 2, ASTM A 204 Gr. A & B, DIN 17175 Gr. 15 Mo3 & 16 Mo3 with IBR Test Certificate.

Carbon Steel / Boiler Quality Plates: IS 2062 Gr. A, B & C, IS 2002 Gr. 1 & 2, ASTM A516 Gr. 60 & 70, ASTM A515 Gr.70.

High Nickel Alloy: Monel, Nickel, Inconel, Hastalloy, Titanium, Tantalum, Bismuth, Aluminium, High Speed Steel, Copper, Brass, Bronze, Zinc, Lead etc.

Duplex & Super Duplex Steel: UNS S31803, UNS S32750, UNS S32760, etc.

Types: Sheet, Plates, Strips, Etc.



FASTENERS & NUT BOLTS

Stainless Steel: AISI 302, 304, 304L, 316, 316L, 310, 317, 321, 347, 410, 420, 904L, etc.

Alloy Steel: 4.6, 5.6, 6.6, 8.8, 10.9 & 12.9 'R', 'S', 'T' Conditions.

Carbon Steel: Bare Condition, Galvanized, Phosphatised, Cadmium Plated, Hot Deep Galvanized, Bloodied, Nickel Chrome Plated, etc.

Non Ferrous Metal: Copper, Brass, Aluminium, Titanium, Nichrome, Al-Bronze, Phosphorous bronze, etc.

Types: Bolts, Nuts, Washer, Anchor, Fasteners, Stud Bolts, Eye Bolt, Stud, Threaded Rod, Cotter Pin, Socket, Screw, Fine Fasteners & Spares, Foundation Fasteners, etc.

VALVES



Stainless Steel: AISI 304, 304L, 316, 316L, 310, 317, 317L, 321, 347, 904L, etc.

Carbon Steel: A105, A216, Gr. WCB, Cadmium Plated, Nickel, Chrome Plated, etc.

Non Ferrous Metal: Copper, Brass, Titanium, Phosphorous Bronze, etc.

Types: Ball Valve, Gate Valve, Check Valve, Needle Valve, Mini Valve, Gauge Rott Valve, Globe Valve, Manifolds (2-way, 3-Way, 5-Way)



ROUND, SQUARE & HEX BAR

Stainless Steel: ASTM A276 & A479 Grade 202/ 304/ 304L/ 316/ 316L/ 316Ti 317/ 317L 321/ 310/ 347/ 410/ 416/ 420/ 430/ 440C/ 904/ 303/ 17-4PH, 15-5PH, etc.

Nickel Alloys: Monel, Inconel, Hastelloy, Nickel, Titanium, Alloy 20, etc.

Duplex & Super Duplex: UNS 32205, 31803, 32750, 32760, etc.

Types: Round, Square, Hexagon, Circles & Blanks.

Size: 3mm - 75mm dia. ready stock with Mill Test Certificate.

Process: Cold Drawn, Annealed, Export Bright & Black.

Tolerance: H9, H11

DIARY FITTINGS



Stainless Steel: AISI 304, 304L, 316, 316L, 310, 317, 317L, 321, 347, 904L, etc.

Carbon Steel: A105, A216, Gr. WCB, Cadmium Plated, Nickel, Chrome Plated, etc.

Non-Ferrous Metal: Copper, Brass, Titanium, Phosphorous Bronze, etc.

Types: Nipple, Dairy Fittings, Union, S.M.S., I.D.F., Dairy Valve, Butterfly Valve, Ball

Valve, Needle Valve, N.R.V. Valve, Foot Valve, Safety Valve, Cock Valve, Syphon Tube, etc.

OUR CLIENTS



Our Locations

Pune Location : Bashweshwar Ind, Complex, Gala No 5,
Vishweshwar Chowk, MIDC, Bhosari, Pune – 411026
Contact No: +91 8380819502 | +91 9920049315

Mumbai Location : 39/41, Kamal Niwas, 2nd Floor,
Off. No 14, 1st Kumbharwada, Mumbai-400004
Contact No: +91 9619140173 | +91 9819620563

Connect Us :

+91 7588803355 / +91 7588803366